

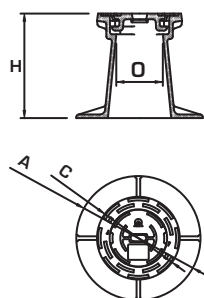
CHIUSINI PER SARACINESCA SURFACE BOXES

REALIZZATI IN GHISA A GRAFITE SFEROIDALE secondo ISO 1083 e EN 1563

MANUFACTURED FROM SPHEROIDAL GRAPHITE CAST IRON IN ACCORDANCE WITH

ISO 1083 and EN 1563 STANDARD

MTC-V CHIUSINO PER SARACINESCA CON CHIUSURA A BAIONETTA - SURFACE BOX

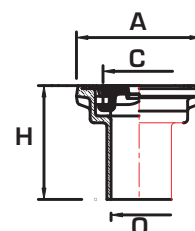


Ref.	Dimensioni - Dimensions (mm)				peso - weight (kg)
	A	O	H	C	
MTC RV circolare - circular	240	90	200	110	7
MTC RC quadrato - square	240	90	200	110	7
MTC HV esagonale - hexagonal	240	90	200	110	7

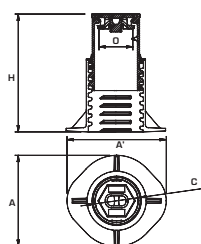
Realces disponibles en versiones R, C e H

RIALZO PER - HEIGHT EXTENSION FOR MTC

Ref.	Dimensioni - Dimensions (mm)				peso - weight (kg)
	A	O	H	C	
RIALZO R circolare - circular	160	74	150	110	4
RIALZO C quadrato - square	135	74	150	110	4
RIALZO H esagonale - hexagonal	175	74	150	110	4



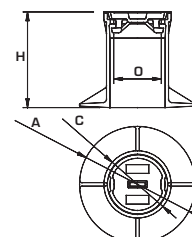
BC 17L CHIUSINO PER SARACINESCA, RIALZABILE, PER ROTAZIONE, CON CHIUSURA A BAIONETTA HEAVY DUTY SURFACE BOX HEIGHT EXTENDED BY ROTATION



Ref.	Dimensioni - Dimensions (mm)				peso - weight (kg)
	A	O	H	C	
BC 17L R	220 x 240	82	185	114	9
BC 17L C	220 x 240	82	185	114	9
BC 17L H	220 x 240	82	185	114	9

BC 4 S CHIUSINO PER SARACINESCA - SURFACE BOX

Ref.	Dimensioni - Dimensions (mm)				peso - weight (kg)
	A	O	H	C	
BC 4 SR	220	82	165	115	4,2



 è un marchio registrato della EJ
EJ registered mark

